



The Future of Aquafeeds

Nordic Climate Change Forum for Fisheries & Aquaculture



Vidar Gundersen | Global Sustainability Director

BioMar Group | December 9-10, 2021

BioMar Global Production Facilities



17 sites
~ 2 mtons capacity

- Turnover**
EUR ~1.6bn
- EBIT**
EUR ~86m
- Tonnage**
~1.34m tons
- Employees**
~1,600
- Feed for +45 different species of fish + shrimp**
- Sale to more than 90 countries**

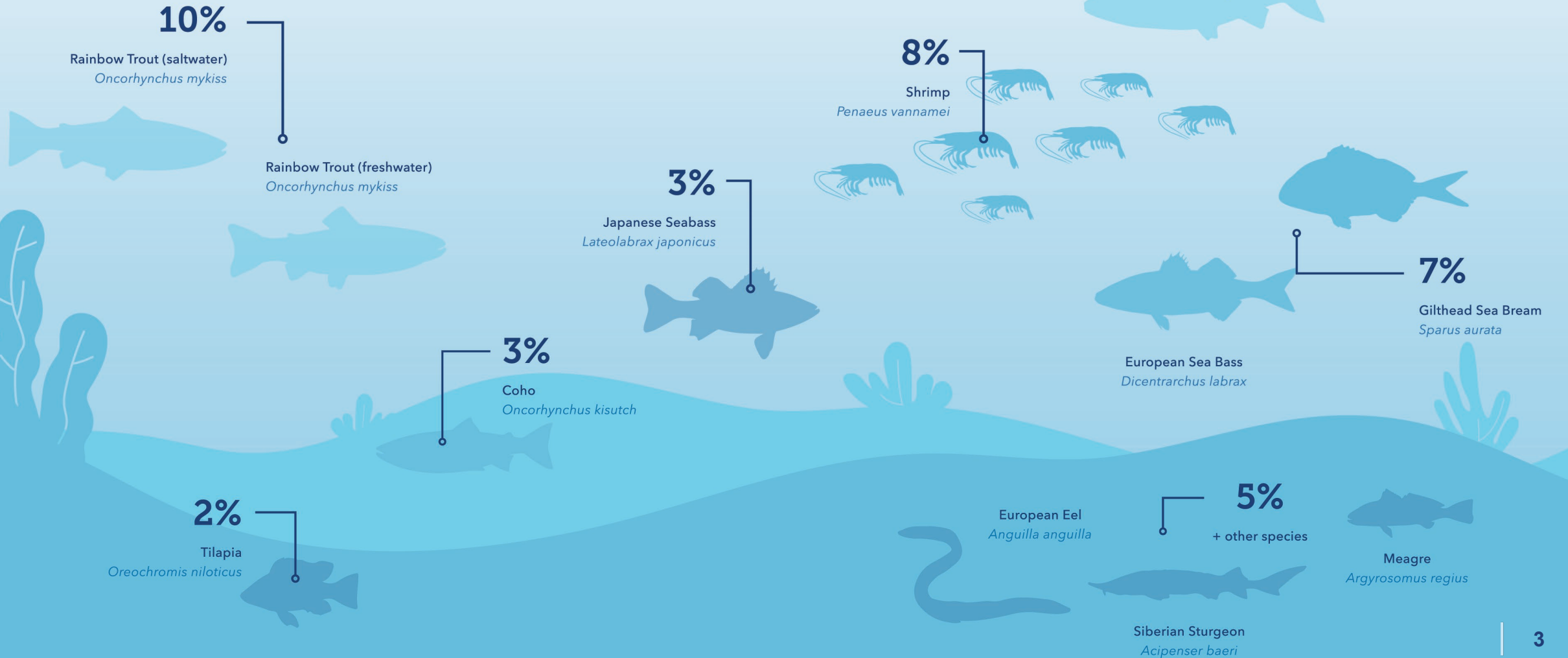


- Global Headquarters
- Production Facilities
- Sales

Powered by Partnership. Driven by Innovation.



Top Species where BioMar supplied the most feed in 2020



Sustainability Approach, Design & Solutions



BioSustain™

BLUE IMPACT™ SOLUTIONS

Corporate Sustainability

Product / Service Sustainability

Differentiation
Added Value

Strategic program for continuous improvement

Pioneer brands

Sustainability leader

Must have
Risk Management

Sustainability Committee

Company initiatives

Premium products

Advanced sustainability differentiator

Voluntary Global standards

Extended product standards

Industry Standard follower

Company activities

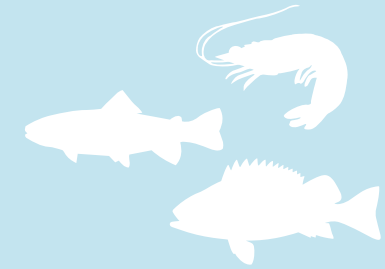
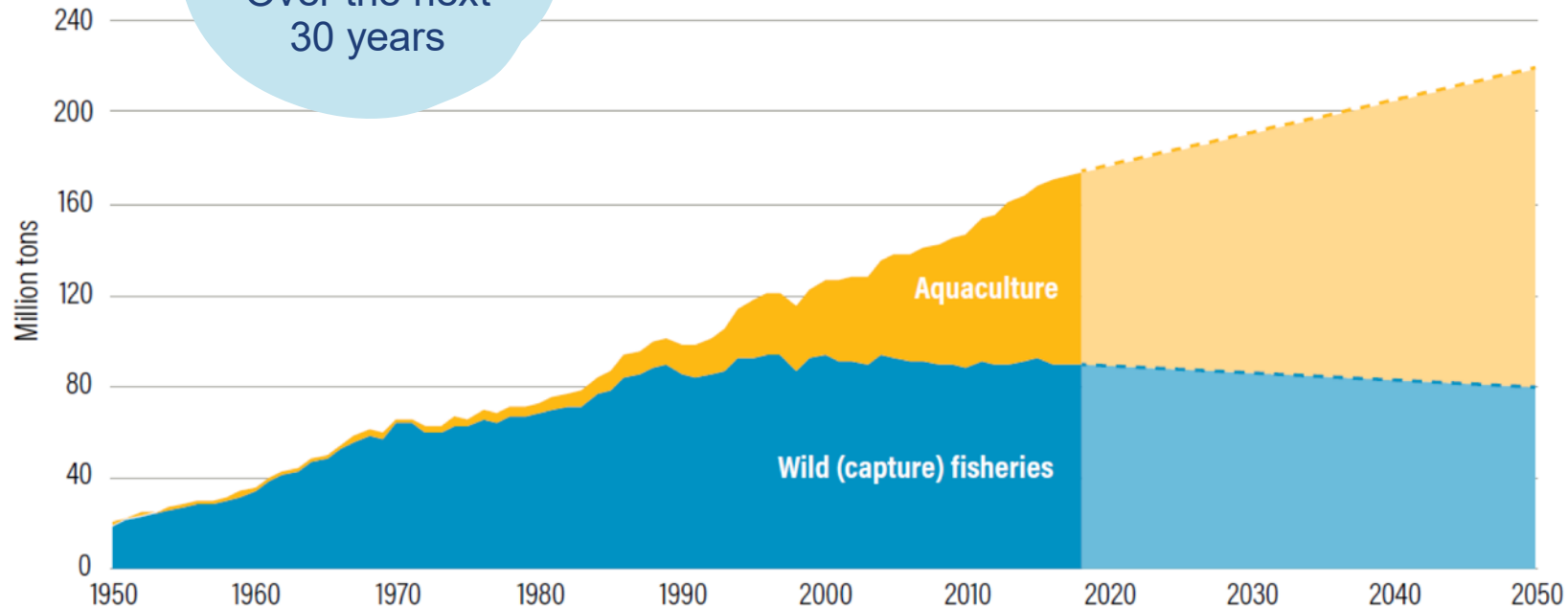
Product Requirements

Legal compliant player

Mission for Sustainable Aquaculture



**2x
Growth**
Over the next
30 years



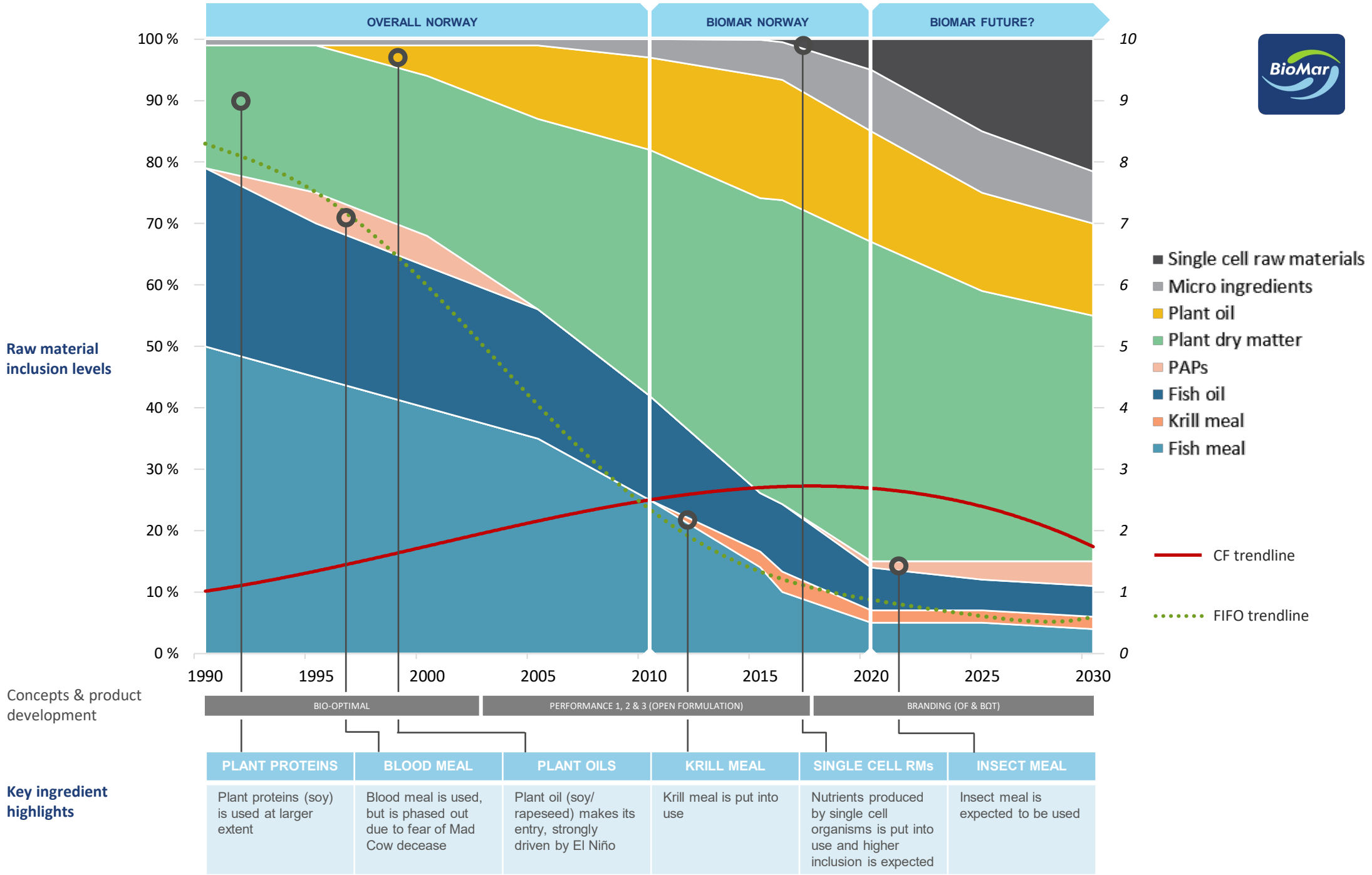
Double aquaculture production by 2050

without taking one more fish from the ocean or using any more agriculture land for crops.

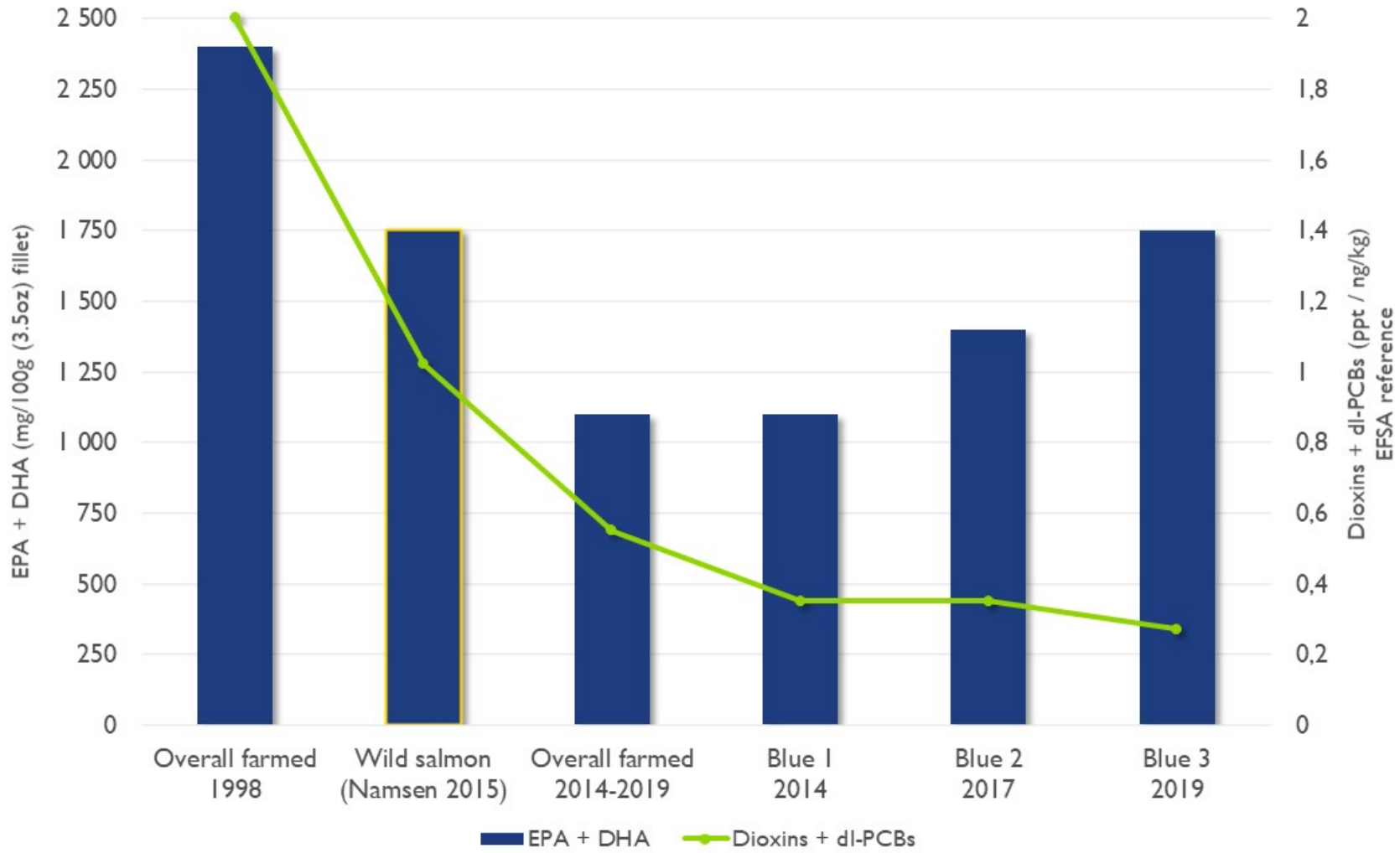
Aquaculture feed is responsible for up to **80% of the environmental impact** of producing seafood.

Source: Historical data, 1950–2016: FAO (2017b) and FAO (2018). Projections to 2050: Calculated at WRI; assumes 10 percent reduction in wild fish catch from 2010 levels by 2050, linear growth of aquaculture production of 2 Mt per year between 2010 and 2050.

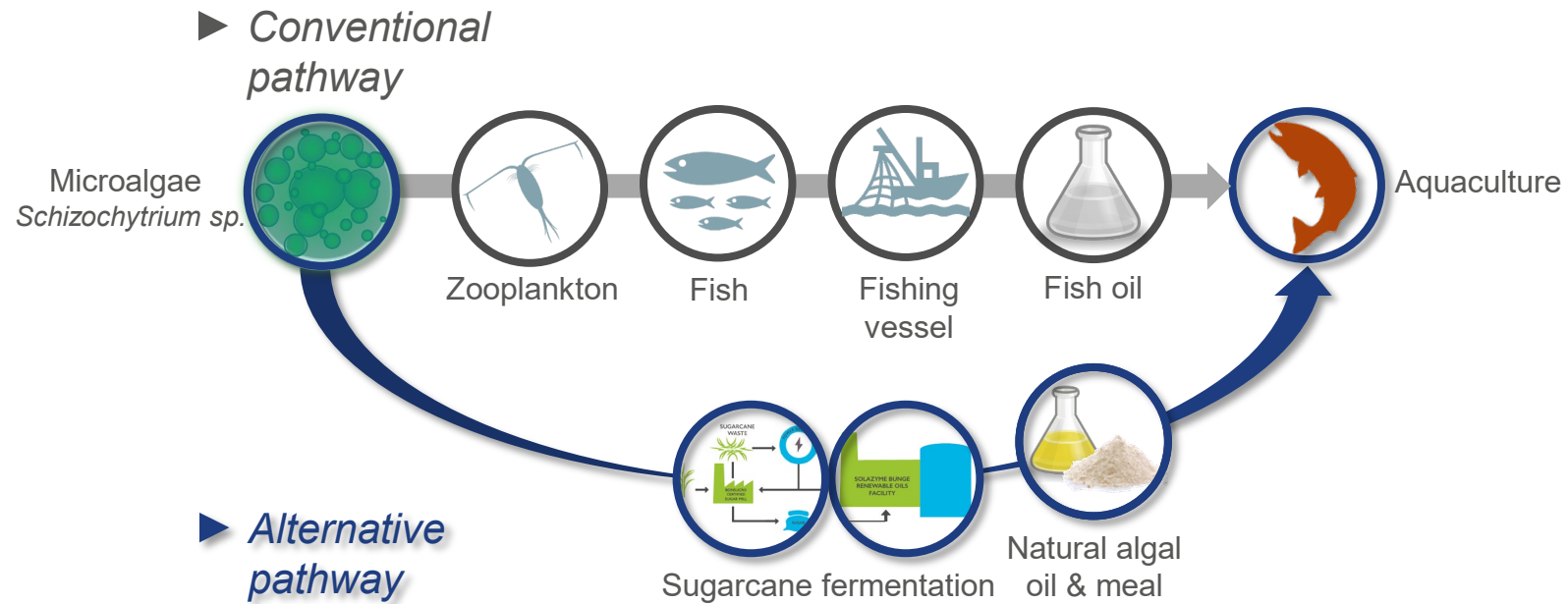
Salmon Feed Evolution



Restoring marine omega-3s, responsibly and sustainably...



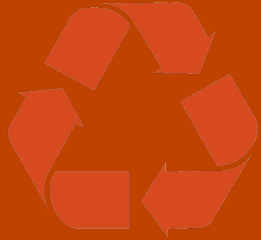
Restoring marine omega-3s with novel ingredients



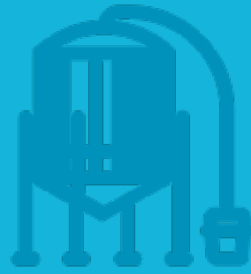
The future of aquafeeds



More **by-product** ingredients and **trimmings**



More ingredients from **single cell** technologies



More ingredients from **lower trophic** levels



The majority of the diet will still be **vegetable**





Climate Action

1/3 by 2030

Reduce BioMar total feed GHG footprint by 1/3 by 2030



Circular & Restorative

50% by 2030

BioMar feeds are 50% circular and restorative by 2030



Enable People

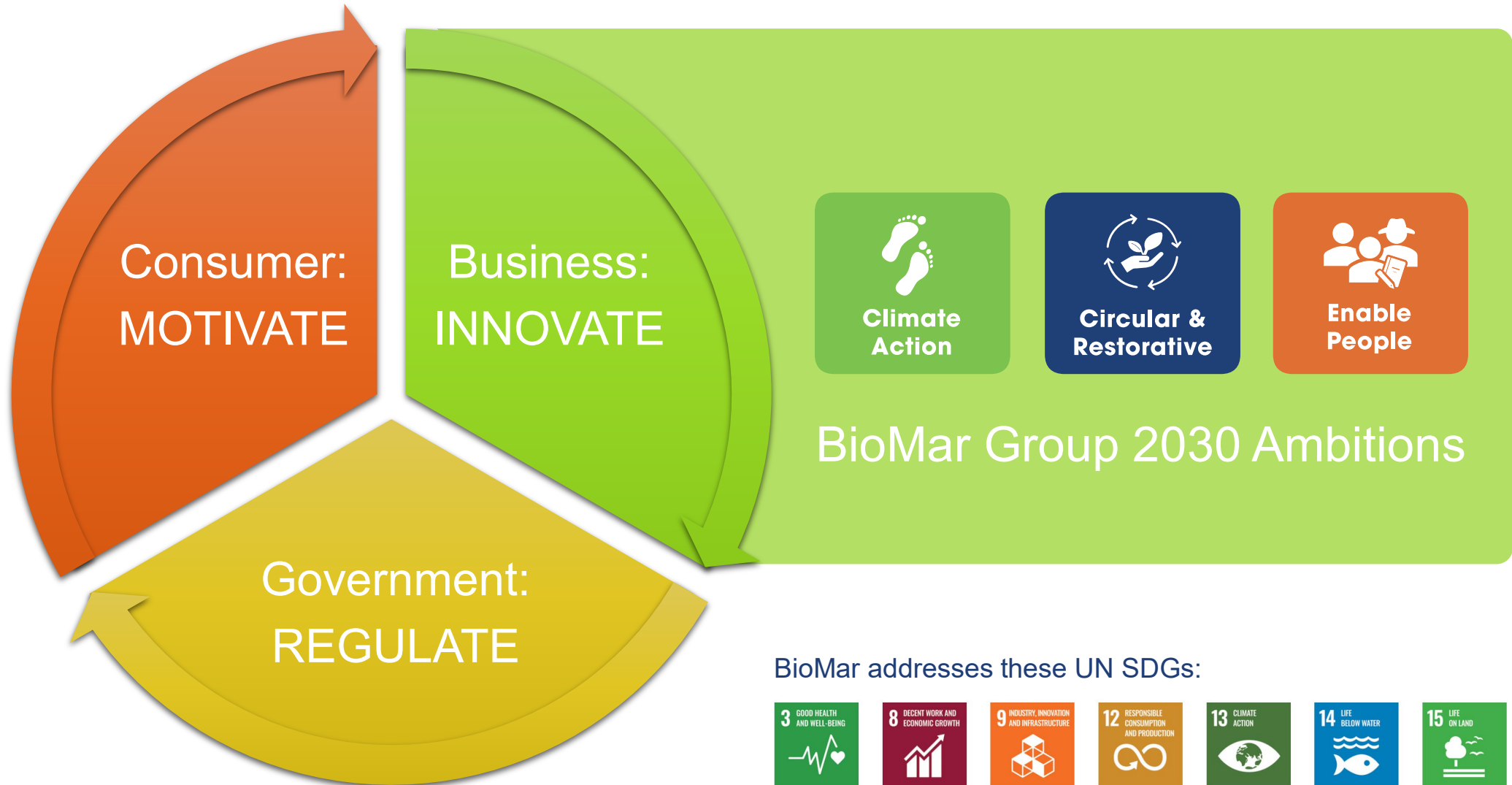
100,000 by 2030

100,000 people directly engaged in capacity building initiatives annually by 2030



Powered by Partnership
Driven by Innovation

Ensuring Sustainable Development





**Powered by Partnership
Driven by Innovation**